

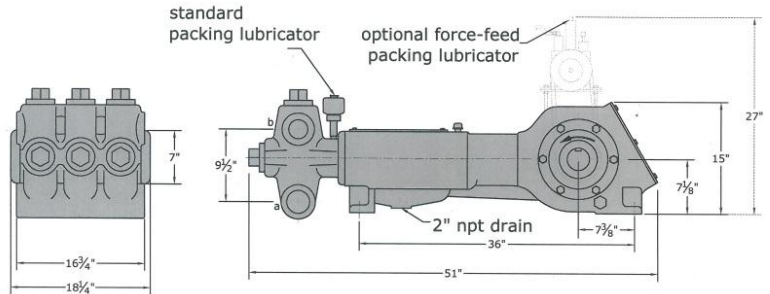
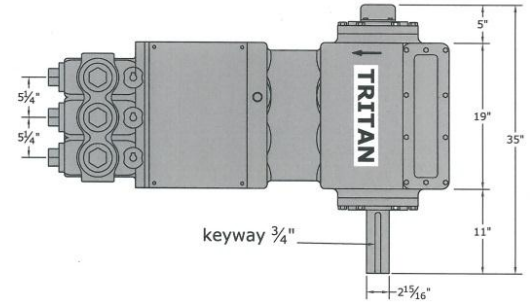
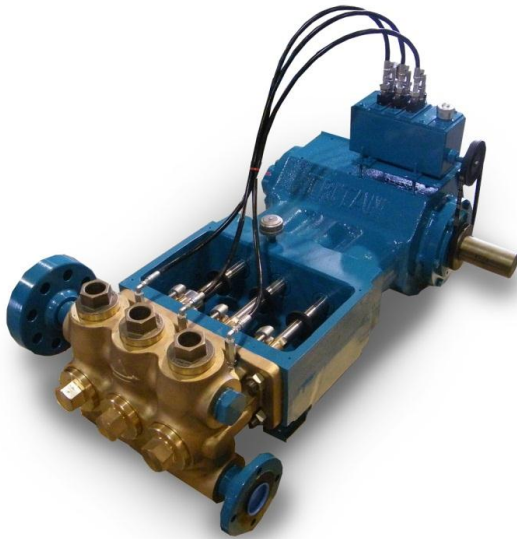


McFarland – TriTan, LLC
 The “High Pressure” Specialists!

Series 3140 AB/DI/SS

Triplex Plunger Pumps

Pressure to 5,250 PSI | Flow to 207 GPM | Power to 200 HP



DISPLACEMENT VOLUME (100% VOL.EFF.)			PUMP SPEED IN CRANKSHAFT REVOLUTIONS PER MINUTE								
			1-3/8" 5,250 PSI	1-1/2" 5,000 PSI	1-5/8" 4,500 PSI	1-3/4" 3,850 PSI	2" 2,950 PSI	2-1/4" 2,300 PSI	2-1/2" 1,875 PSI	3" 1,305 PSI	
GPM	BPH	BPD									
18	26	618	207	174	149	128	98	77	63		
23	33	790	265	223	190	164	125	99	80	56	
28	40	961	323	271	231	199	153	120	98	68	
33	47	1,133	380	319	272	235	180	142	115	80	
43	62	1,476	500	416	355	306	234	185	150	104	
52	74	1,785		500	429	370	283	224	181	126	
61	87	2,094			500	434	332	262	213	148	
66	94	2,266				469	359	274	230	160	
70	100	2,403				500	381	301	244	169	
81	116	2,781					441	349	282	196	
92	132	3,158					500	396	321	223	
104	149	3,570						448	362	252	
116	166	3,982						500	404	281	
130	186	4,463							453	315	
143	205	4,909							500	346	
175	250	6,007								424	
207	296	7,106								500	
GPM FACTOR			0.0868	0.1033	0.1212	0.1406	0.1836	0.2324	0.2869	0.4131	
BPH FACTOR			0.1240	0.1480	0.1740	0.2000	0.2640	0.3320	0.4100	0.5920	
500 Max RPM BHP=(GPM XPSI) / 1543 All figures based on 100% volumetric efficiency											

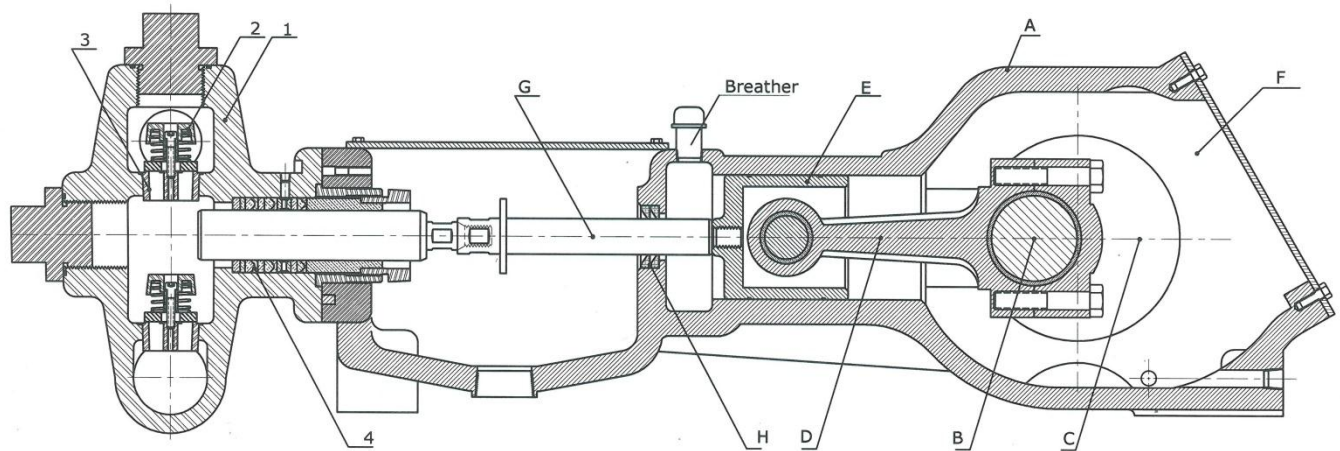
921 Seaco Court, Deer Park, TX 77536, USA

Tel: 1-713-864-3366 / Fax: 1-713-864-3252

Email: sales@tritanpump.com

www.tritanpump.com

Series 3140 AB/DI/SS



SPECIFICATIONS

- * Number of Plungers 3
- * Stroke Length: 4-1/2" (114 mm)
- * Plunger Load 9940 lbs
- * Pump Weight 1250 lbs
- * Oil Capacity 2 U.S gallons
- * Suction Connection 2-1/2" NPT
- * Discharge Connection 2"

FLUID END

- 1) Fluid End Body:** One piece cast ductile iron or Aluminum Bronze.
- 2) Valves:**
 - A- CELCON Valve-Bronze seat or
 - B- CELCON Valve- stainless steel seat.
 - C- Hardened stainless steel valve & seat.
- 3) Tapered seated valve decks.**
- 4) Plungers:** Plunger materials available are: colmonoy coated stainless steel, ceramic, and tungsten carbide.

Services:

- * Crude Oil
- * Fresh Water
- * Salt Water
- * Corrosive Fluids

POWER END

- A) Power Frame:** High strength gray iron alloy casting with heavy wall sections well ribbed to insure rigid construction, totally enclosed with sealed access cover
- B) Crankshaft:** Ductile iron for inherent shock load damping, mounted with center line of shaft on center line of cross-head. Crankshafts may extend from either side.
- C) Crankshaft Bearings:** Interchangeable heavy duty roller bearing. Minimum L-10 rated life of 60,000 hours at maximum RPM.
- D) Connecting Rods:** All TriTan plunger pumps are equipped with H-type connecting rods, with replaceable inserts.
- E) Crossheads:** High strength alloy castings, cross head and guides are Cylindrical for maximum bearing area and alignment, Crosshead pins are hardened and ground steel.
- F) Lubrication:** All power end parts are lubricated by splash system from oil in crankcase reservoir. Power frame has an oil return channel, from front of crossheads back to crankcase, to permit constant circulation of oil and to help keep oil cool.
- G) Pony Rods:** Pony rods are polished stainless steel, independent-not part of crosshead or plunger.
- H) Pony Rod Seals:** Double acting lip seals around pony rod-prevents oil leakage from the inside and precludes contamination entering from the outside.



McFarland – TriTan, LLC
921 Seaco Court, Deer Park, TX 77536
Tel : 1-713-864-3366 | Fax : 1-713-864-3252
Email: sales@tritanpump.com, www.tritanpump.com

921 Seaco Court, Deer Park, TX 77536, USA

Tel: 1-713-864-3366 / Fax: 1-713-864-3252 Email: sales@tritanpump.com

www.tritanpump.com