

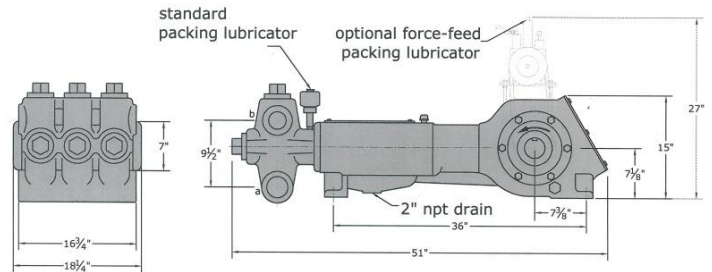
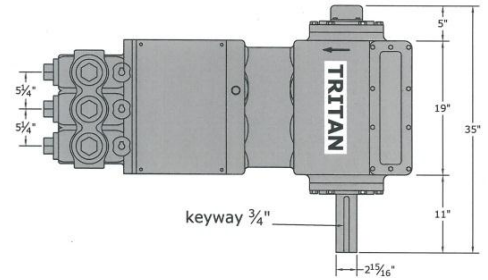
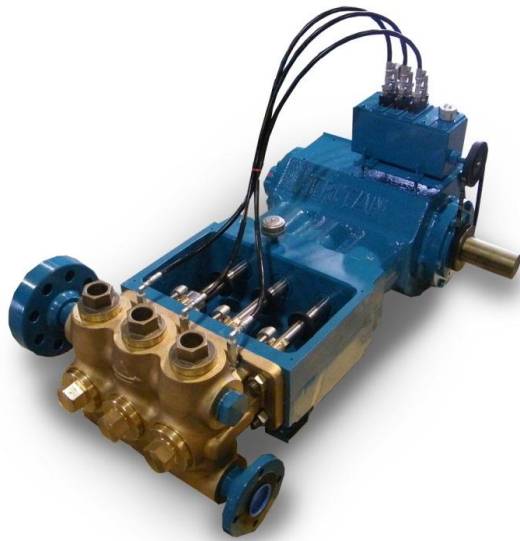


McFarland – TriTan, LLC
 The “High Pressure” Specialists!

Series 3150 AB/DI/SS

Triplex Plunger Pumps

Pressure to 5,500 PSI | Flow to 160 GPM | Power to 150 HP



DISPLACEMENT VOLUME (100% VOL.EFF.)			PUMP SPEED IN CRANKSHAFT REVOLUTIONS PER MINUTE											
			1-1/4" 5,500 PSI	1-3/8" 5,250 PSI	1-1/2" 5,000 PSI	1-5/8" 4,795 PSI	1-3/4" 4,135 PSI	2" 3,165 PSI	2-1/4" 2,500 PSI	2-1/2" 2,025 PSI	3" 1,305 PSI			
GPM	BPH	BPD												
5	7	168	90	74	62	53								
10	14	336	179	148	125	106	91	70	55					
15	21	504	269	222	187	159	137	105	83	67				
20	29	696	358	296	249	212	183	140	111	90	63			
25	36	864	448	370	311	265	229	175	138	112	78			
30	43	1,032		444	374	318	274	210	166	134	94			
35	50	1,200			436	371	320	245	194	157	109			
40	57	1,368			498	424	366	280	221	179	125			
45	64	1,536				477	412	315	249	202	141			
50	71	1,704					457	350	277	224	156			
55	79	1,896					503	385	304	247	172			
60	86	2,064						420	332	269	188			
65	93	2,232						455	360	291	203			
70	100	2,400						490	387	314	219			
75	107	2,568							415	336	234			
80	114	2,736							443	359	250			
85	121	2,904							470	381	266			
90	129	3,096							498	403	281			
95	136	3,264								425	297			
110	157	3,768								493	344			
135	193	4,632									422			
160	228	5,472									500			
GPM FACTOR			0.0558	0.0657	0.0803	0.0943	0.1093	0.1428	0.1807	0.2231	0.3213			
BPH FACTOR			0.0797	0.0964	0.1147	0.1347	0.1562	0.2040	0.2582	0.3187	0.4563			
			500 Max RPM					BHP=(GPM XPSI) / 1543						
			All figures based on 100% volumetric efficiency											

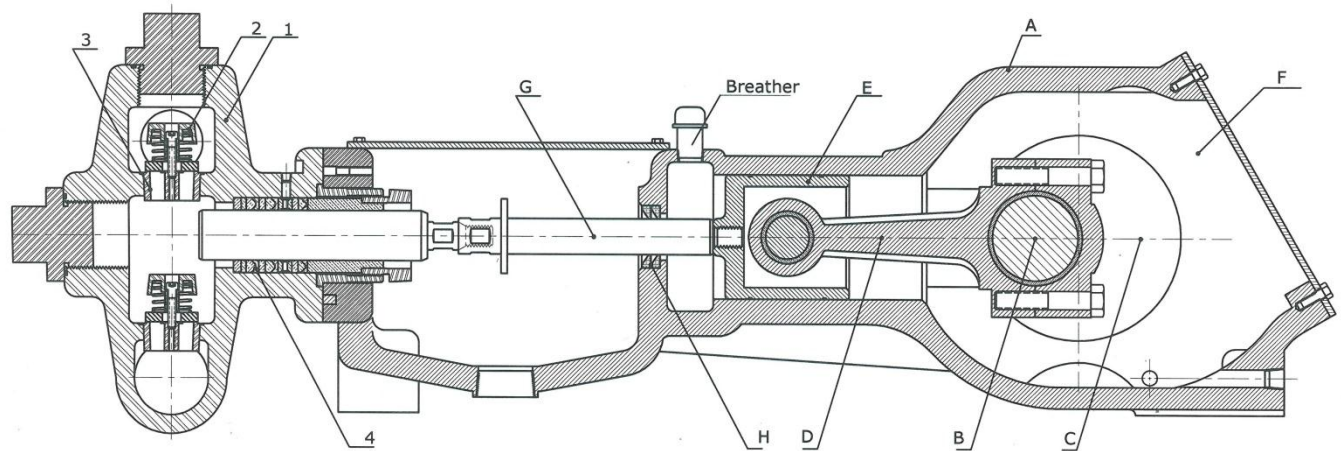
921 Seaco Court, Deer Park, TX 77536, USA

Tel: 1-713-864-3366 / Fax: 1-713-864-3252

Email: sales@tritanpump.com

www.tritanpump.com

Series 3150 AB/DI/SS



SPECIFICATIONS

- * Number of Plungers 3
- * Stroke Length: 3-1/2" (89 mm)
- * Plunger Load 9940 lbs
- * Pump Weight 1250 lbs
- * Oil Capacity 2 U.S gallons
- * Suction Connection 2-1/2" NPT
- * Discharge Connection 2"

FLUID END

- 1) Fluid End Body:** One piece cast ductile iron or Aluminum Bronze.
- 2) Valves:**
 - A- CELCON Valve-Bronze seat or
 - B- CELCON Valve- stainless steel seat.
 - C- Hardened stainless steel valve & seat.
- 3) Tapered seated valve decks.**
- 4) Plungers:** Plunger materials available are: colmonoy coated stainless steel, ceramic, and tungsten carbide.

Services:

- * **Crude Oil**
- * **Fresh Water**
- * **Salt Water**
- * **Corrosive Fluids**

POWER END

- A) Power Frame:** High strength gray iron alloy casting with heavy wall sections well ribbed to insure rigid construction, totally enclosed with sealed access cover
- B) Crankshaft:** Ductile iron for inherent shock load damping, mounted with center line of shaft on center line of cross-head. Crankshafts may extend from either side.
- C) Crankshaft Bearings:** Interchangeable heavy duty roller bearing. Minimum L-10 rated life of 60,000 hours at maximum RPM.
- D) Connecting Rods:** All TriTan plunger pumps are equipped with H-type connecting rods, with replaceable inserts.
- E) Crossheads:** High strength alloy castings, cross head and guides are Cylindrical for maximum bearing area and alignment, Crosshead pins are hardened and ground steel.
- F) Lubrication:** All power end parts are lubricated by splash system from oil in crankcase reservoir. Power frame has an oil return channel, from front of crossheads back to crankcase, to permit constant circulation of oil and to help keep oil cool.
- G) Pony Rods:** Pony rods are polished stainless steel, independent-not part of crosshead or plunger.
- H) Pony Rod Seals:** Double acting lip seals around pony rod-prevents oil leakage from the inside and precludes contamination entering from the outside.



McFarland – TriTan, LLC
921 Seaco Court, Deer Park, TX 77536
Tel :1-713-864-3366 | Fax : 1-713-864-3252
Email: sales@tritanpump.com, www.tritanpump.com

921 Seaco Court, Deer Park, TX 77536, USA

Tel: 1-713-864-3366 / Fax: 1-713-864-3252 Email: sales@tritanpump.com

www.tritanpump.com