

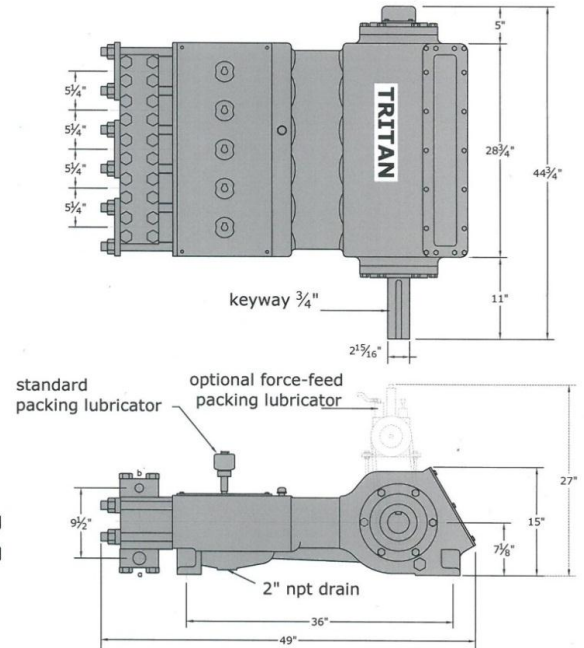
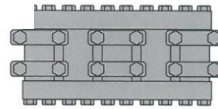
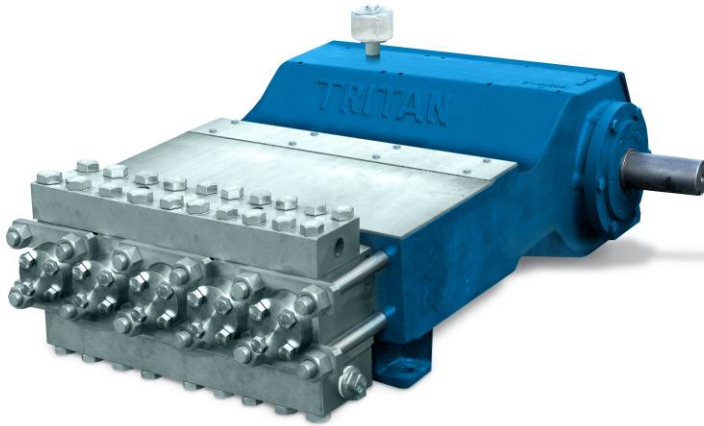


McFarland – TriTan, LLC
The “High Pressure” Specialists!

Series 5225 SX

Quintuplex Plunger Pumps

Pressure to 40,000 PSI | Flow to 72 GPM | Power to 300 HP



DISPLACEMENT VOLUME (100% VOL.EFF.)			PUMP SPEED IN CRANKSHAFT REVOLUTIONS PER MINUTE							
			3/8" 40,000 PSI	5/8" 30,000 PSI	3/4" 22,000 PSI	7/8" 16,530 PSI	1" 12,655 PSI	1-1/8" 10,000 PSI	1-1/4" 8,100 PSI	1-3/8" 6,695 PSI
GPM	BPH	BPD								
0.6	0.8	20	55							
1	1.4	34	92							
2	3	67	183	67						
3	4	102	275	101	70					
4	6	137	367	134	93	68	52			
6	9	205		201	139	103	78	62		
8	11	273		268	186	137	105	83	67	55
12	17	412		403	278	205	157	124	100	83
16	23	550			371	274	209	165	134	111
20	29	684			464	342	261	207	167	138
24	34	823				410	314	248	201	166
28	40	962				479	366	289	234	194
32	46	1,069					418	331	268	221
36	51	1,235					471	372	301	249
40	57	1,373						413	334	277
44	63	1,507						455	368	304
50	71	1,716							418	346
56	80	1,919							468	387
64	92	2,197								443
72	102	2,478								500
GPM FACTOR			0.0108	0.0298	0.0431	0.0585	0.0765	0.0968	0.1196	0.1446
BPH FACTOR			0.0154	0.0426	0.0616	0.0836	0.1093	0.1383	0.1709	0.2066

500 Max RPM BHP=GPM XPSI / 1543
All figures based on 100% volumetric efficiency

Applications:

- * Hydrostatic Testing
- * Water Blasting/ Jetting
- * Chemical Injection
- * Concrete Demolition
- * Water Disposal

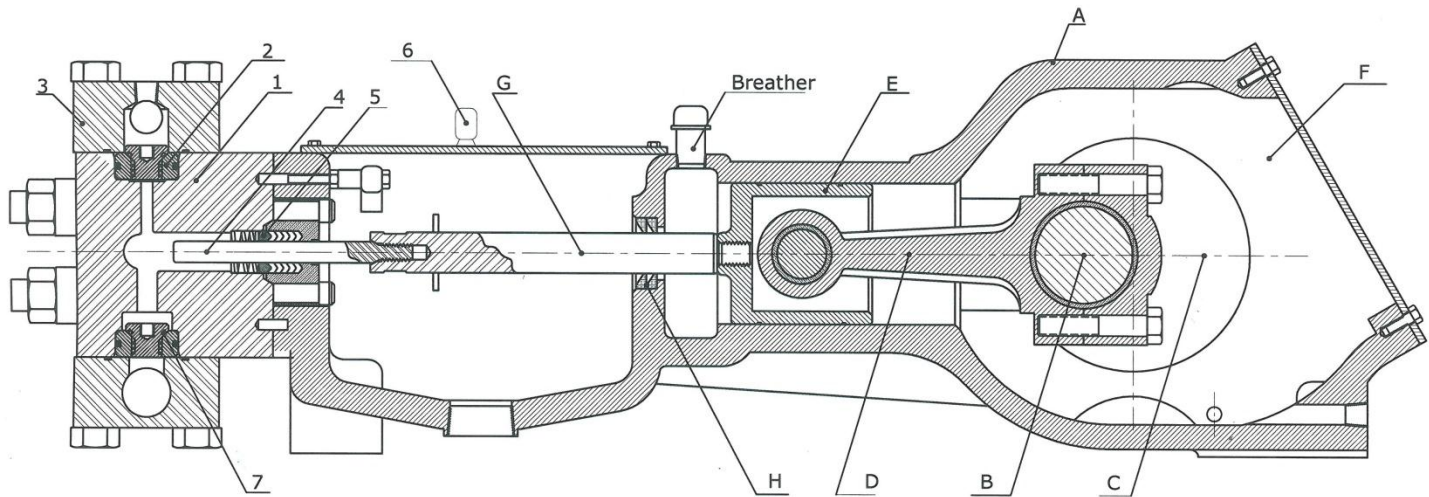
921 Seaco Court, Deer Park, TX 77536, USA

Tel: 1-713-864-3366 / Fax: 1-713-864-3252

Email: sales@tritanpump.com

www.tritanpump.com

Series 5225 SX



SPECIFICATIONS

- * Number of Plungers 5
- * Stroke Length: 4-1/2" (114 mm)
- * Plunger Load 9940 lbs
- * Pump Weight 2180 lbs
- * Oil Capacity 4 U.S gallons
- * Suction Connection 1-1/2" NPT
- * Discharge Connection 1" or Autoclave

FLUID END

- 1) Fluid End Body:** Stainless steel alloys for high pressure applications with generous radii at intersecting bores reduces stress points that can cause fluid block cracks. Smooth flow body design reduces flow velocity, turbulence and pulsation-virtually eliminates cavitation.
- 2) Valves:** . All stainless steel fluid end pumps are furnished with cone seat internal spring non-tapered seat style valves. All valves are vertical eliminating valve guide friction drag found in horizontal valves.
- 3) Valve Covers:** Stainless steel fluid end with bolts- on valve covers to prevent galling.
- 4) Plungers:** Plunger materials available are: colmonoy coated stainless steel, ceramic, and tungsten carbide.
- 5) Packing:** Chevron "V" ring style high pressure plunger packing is furnished in all pumps, changed in minutes without fluid block removal.
- 6) Plunger Lubrication:** Water packing lubrication is standard for all stainless steel high pressure pumps. Grease, Oil drip, and forced feed lubrication are furnished as designated.
- 7) Metal to metal valve seating:** Precision metal to metal, plus O-Ring to metal, valve seating result in 98% volumetric efficiency –reduces horsepower requirements.

POWER END

- A) Power Frame:** High strength gray iron alloy casting with heavy wall sections well ribbed to insure rigid construction, totally enclosed with sealed access cover
- B) Crankshaft:** Ductile iron for inherent shock load damping, mounted with center line of shaft on center line of cross-head. Crankshafts may extend from either side.
- C) Crankshaft Bearings:** Interchangeable heavy duty roller bearing. Minimum L-10 rated life of 60,000 hours at maximum RPM.
- D) Connecting Rods:** All TriTan plunger pumps are equipped with H-type connecting rods, with replaceable inserts.
- E) Crossheads:** High strength alloy castings, cross head and guides are Cylindrical for maximum bearing area and alignment, Crosshead pins are hardened and ground steel.
- F) Lubrication:** All power end parts are lubricated by splash system from oil in crankcase reservoir. Power frame has an oil return channel, from front of crossheads back to crankcase, to permit constant circulation of oil and to help keep oil cool.
- G) Pony Rods:** Pony rods are polished stainless steel, independent-not part of crosshead or plunger.
- H) Pony Road Seals:** Double acting lip seals around pony rod-prevents oil leakage from the inside and precludes contamination entering from the outside.



McFarland – TriTan, LLC
921 Seaco Court, Deer Park, TX 77536
Tel : 1-713-864-3366 | Fax : 1-713-864-3252
Email: sales@tritanpump.com, www.tritanpump.com